



Phase One iXG Camera

Sensor Cleaning Procedure

Ver. 1.2

Phase One 2014-2018 90040957



Contents

Phase One iXG Camera	1
Sensor Cleaning Procedure	1
Introduction.....	3
Required tools.....	3
Dismounting a Lens from the iXG Camera.....	4
Cleaning the Camera’s Sensor.....	5
Reassembling the Camera Body in Place.....	7
Mounting a Lens	7

Introduction

This procedure shows how to clean the sensor on iXG camera.

The procedure is done in four steps:

1. Removing the lens
2. Cleaning the camera interior and sensor module
3. Reassembling the camera body
4. Mounting the lens

Required tools

Before you start, make sure that you have the following:

- A clean, dry place to perform the service
- Hex #2.5mm screwdriver
- Torque handle set to 70cNm
- 2.5mm x 100mm Hex head bit
- Phase One cleaning kit

Dismounting a Lens from the iXG Camera

Lenses on the iXG series of cameras are easily dismounted.

NOTE: Ensure that you only dismount lenses in a clean environment. Place the detached lens on a soft cloth on the table to avoid scratching the lens.

To dismount the lens:

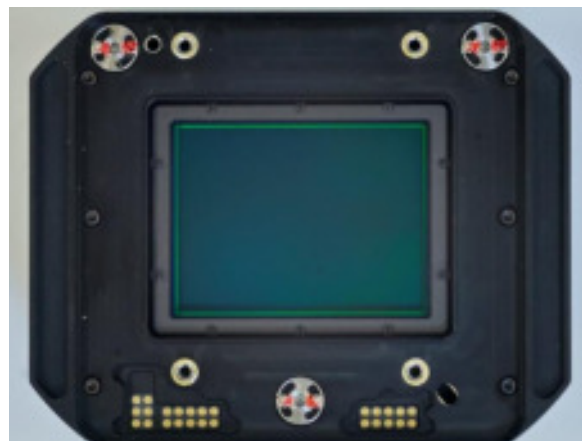
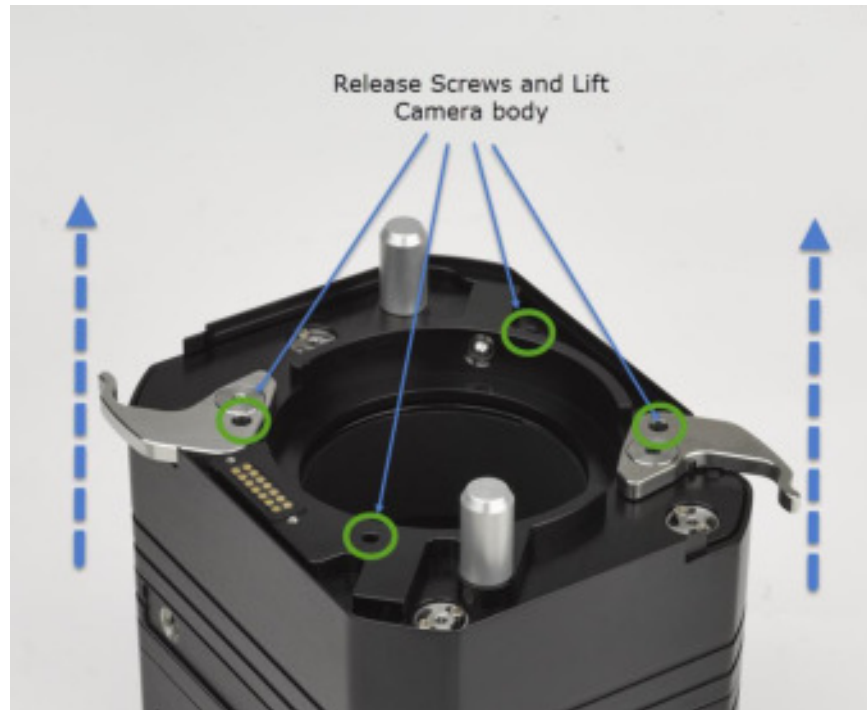
- Release the lens' locking levers.
- Remove the lens by pulling it gently away from the camera.



NOTE: If no lens is being mounted, ensure that the camera is stored in a way that protects it from dust, moisture and other damage. When the iXG camera is mounted facing down, always make sure (double check) that the lens is well secured by having the lens locking levers engaged.

- Cover the front of the camera to prevent damage to the sensor.
- With a 2.5mm hex screwdriver, release the four camera module screws and lift the entire camera body, place it on a clean surface.

Note: Make sure that the sensor module is well protected.



Cleaning the Camera's Sensor

- Locate the small plastic wiper and identify the size that fits your sensor size.
- Fold one cloth and fold this over the wiper so that you have two layers of cloth.
- Apply 2-3 drops of Eclipse fluid to the edge of the folded cloth.

- In one move, swipe the surface of the sensor in one direction from start to finish.
- Inspect the sensor and check to see if it is clean by holding it near a light. And/or with a magnifying glass



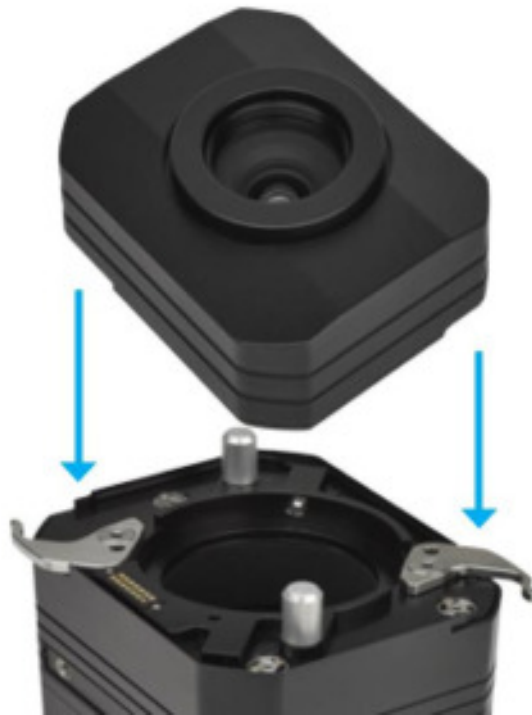
If necessary, move the cloth layer one centimeter on the wiper and repeat the process. Never swipe twice with the same area of the cloth.

Reassembling the Camera Body in Place

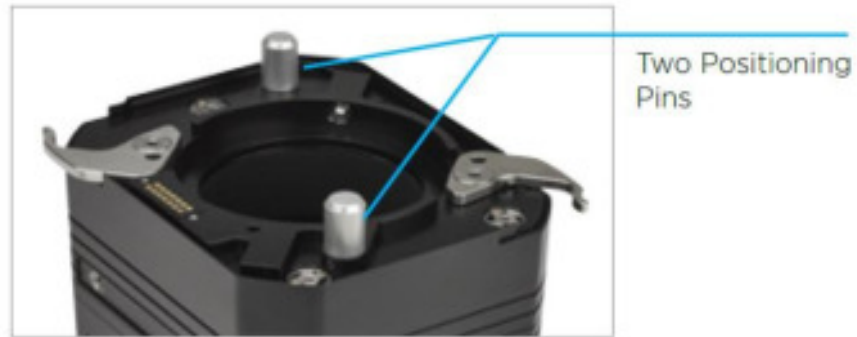
- Realign the camera body into place.
- Tighten the captive screws with a torque of 70cNm.

Mounting a Lens

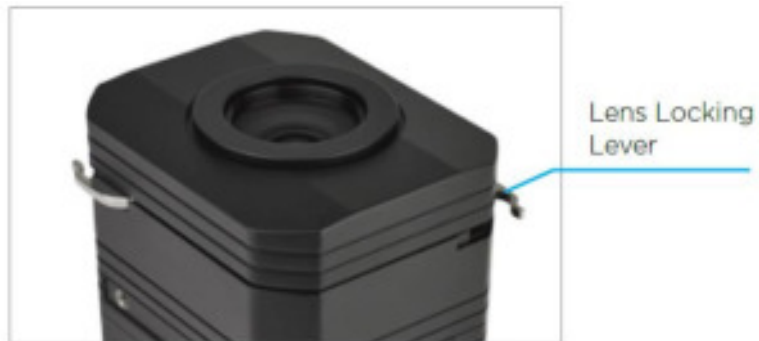
NOTE: Before mounting or dismounting a lens, ensure that the power cable is not attached to the camera.



- Place the Lens over the iXG camera body and guide it into position against the camera body using the two large positioning pins.



- Close the Lens locking levers.



Note: The Lens is a-symmetrical, and can only be fitted in ONE position.

- Replace the lens, take and inspect image. We recommend photographing a uniform grey or white paper or an image that is diffused by holding an opaque filter in front of the lens
- Repeat the above steps as necessary until the sensor is clean