



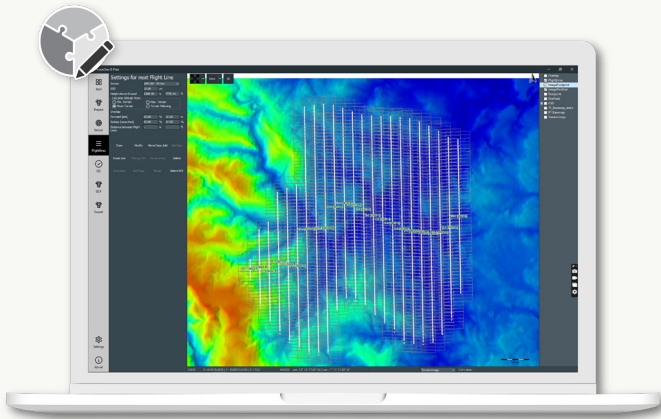
PHASE ONE

iX Suite

Seamless workflow,
quality assured from the earliest stage.

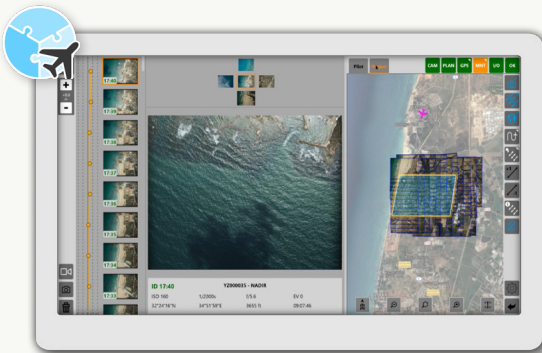
iX Suite

Take your workflow to the next level by assuring quality from the earliest possible stage during planning, execution and processing of your PAS mission.



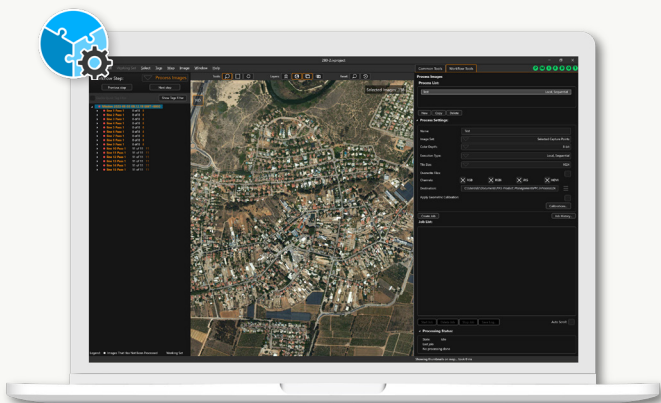
iX Plan

Experience streamlined, accurate mission planning with iX Plan – your ultimate tool for seamless project coordination where flight lines are automatically generated according to your initial configuration.



iX Flight Pro

Elevate your mapping project with iX Flight Pro – a comprehensive all-in-one tool to easily master your missions transforming flight plans into clear directives for pilots and empowering the operators to instantly review images while flying.



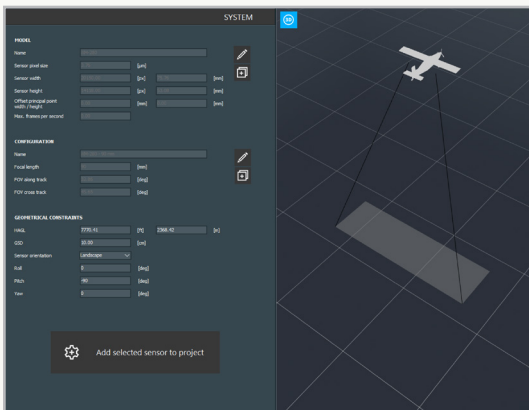
iX Process

Speed up your workflow with iX Process – your go-to solution for immediate full-resolution image review, radiometry adjustment, geometric corrections, and direct IIQ import for photogrammetry software.

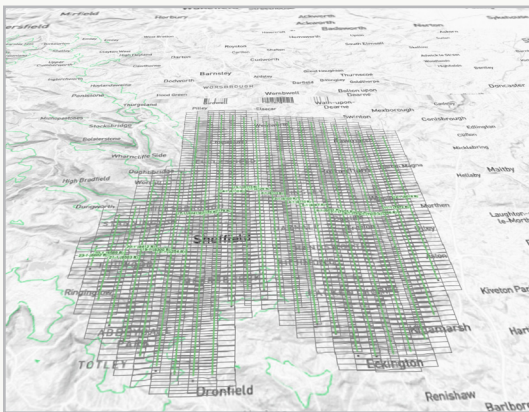


Precision in planning, seamless in mapping.

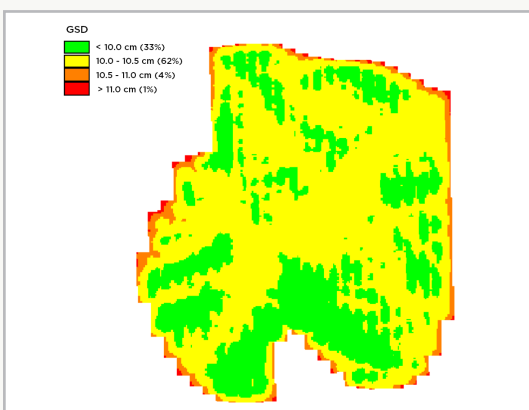
Intuitive and accurate project planning with immediate quality assurance. Effortlessly access to predefined camera and system parameters eliminating the need for manual setup. Experience easy planning and visualization, while ensuring quality control and receiving detailed budget estimation reports.



Predefined camera database preventing human errors entering parameters.



Easy flight line creation and editing saving time for preparation works.

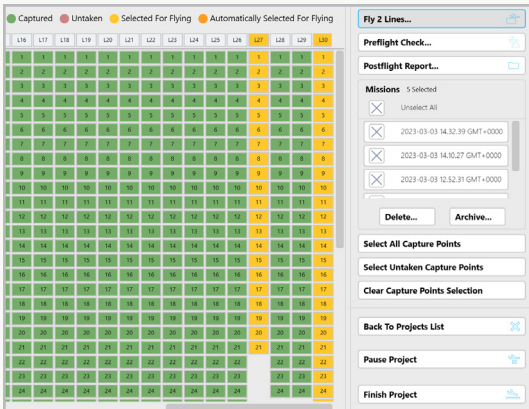


Immediate planning quality assurance making sure the plan is meeting the mapping requirement.



Manage your mission instantly while flying.

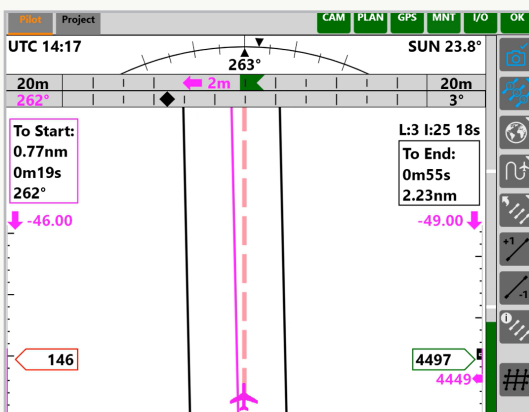
Reliable flight management and data capturing tool. Import your plan with a single button click and proceed with the mission execution according to the flight plans. Benefit from an automatic pre-flight check as soon as all powers are on and cables are connected, ensuring a smooth start. In-flight data review provides immediate decision support, enabling real-time replanning as needed.



Immediate re-fly planning saving tremendous amount of cost.



Real-time image review in full-resolution to enable fast decisions.

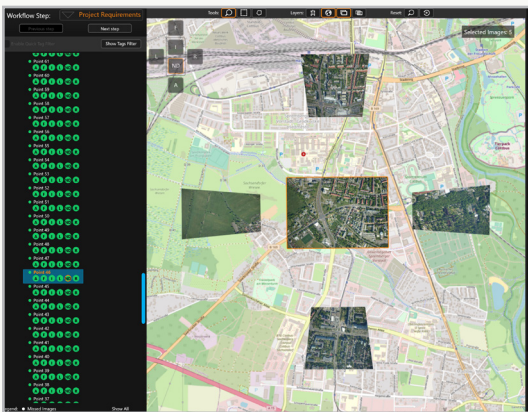


Check and display system and camera status at all times.

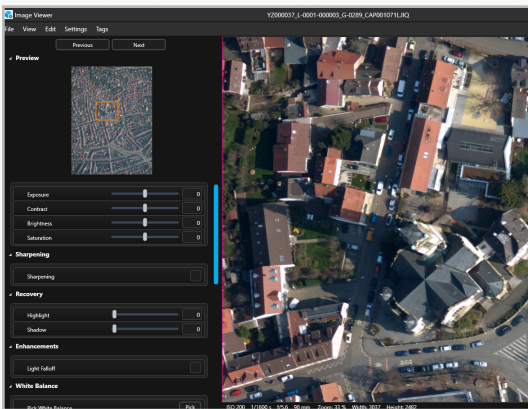


Review without pre-processing, finalize your data in the shortest time.

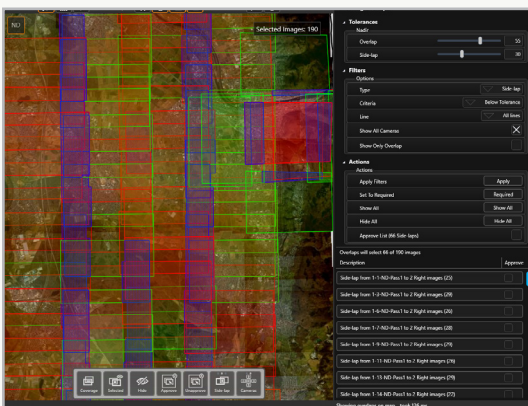
Review your project images right after landing in full resolution without the need for image pre-processing. Adjust image radiometry and correct the distortions upon need for accurate results exported to photogrammetry processing.



Review project with full size images right after landing without any pre-processing.



Adjust image radiometry until satisfied. Modifications are promptly reflected in the “viewer” interface, without directly altering the image itself.



Multiple analytics tools ensuring the final project requirements are met.



PHASEONE

About Phase One

Phase One is a global leader in digital imaging technology. Our commitment to imaging quality spans a wide spectrum of applications, from professional photography to heritage digitization, industrial inspections, aerial mapping, security and space.

With over three decades of innovation, Phase One has pioneered core imaging technologies and a range of digital cameras and imaging modules, setting new standards for image quality in terms of resolution, dynamic range, color fidelity and geometric accuracy. Together with its customers, technology partners and its global network of distributors, Phase One drives the imaging industry forward.

We deliver Imaging Beyond Imagination.
www.phaseone.com

Contact your Phase One representative regarding availability of Phase One products in your region.

© Phase One A/S 2024.
All rights reserved.

   www.phaseone.com