

An aerial photograph of a suburban neighborhood. The image shows a dense residential area with many houses and trees. A river flows through the center of the neighborhood, and a large lake is visible on the right side. The sky is a deep blue. The text "PHASE ONE" is in the top right corner, and "PAS Solutions" is in the bottom left corner.

PHASE**ONE**

# PAS Solutions

Aerial solutions for unrivaled image quality,  
maximum reliability and productivity.

# Enter the world of Phase One

High-end imaging technology from above



## Corridor Mapping

Our compact and lightweight aerial imaging solutions empower you to map and analyze roads, rails, and power lines. This enables you to take informed decisions, optimize operations and improve infrastructure management.

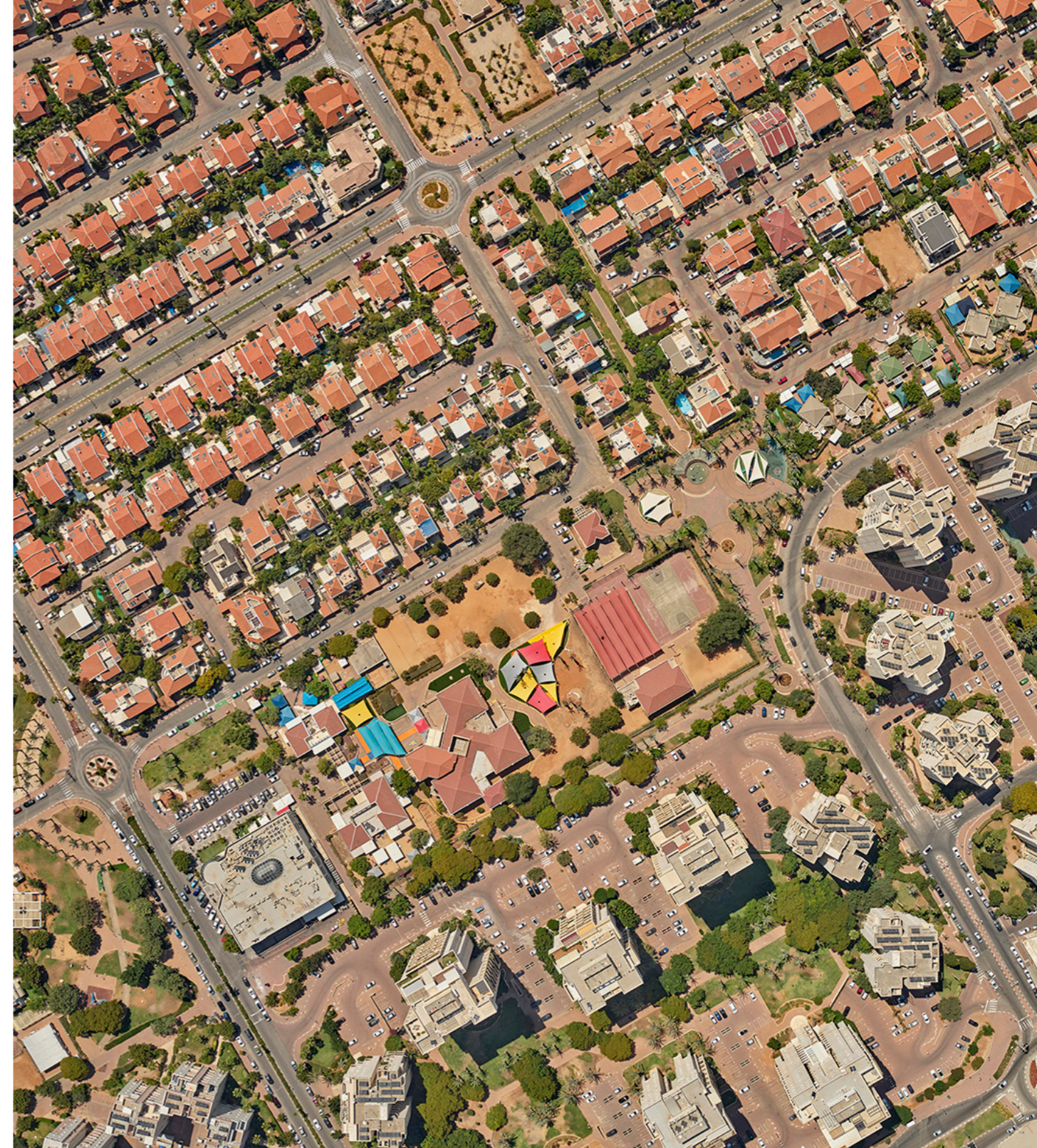
- Public transportation
- Environment and hydrology
- Utility management



## 3D City Modeling

With our 3D city modeling solution, you can effortlessly capture the intricate details of urban environments. Achieve the highest Ground Sampling Distance (GSD) of less than 3 cm, ensuring precise data acquisition without motion blur.

- Urban planning and management
- Real estate



## Large Area Mapping

With our large area mapping solutions you can cover regional, large and country-wide areas while ensuring data quality from the earliest stage.

- Cadastre and land survey
- Environmental monitoring
- Emergency response

Take your productivity to new standards by leveraging swath of up to 48,800-pixel, while choosing from a broad range of GSD coverage.

# Unlock your full potential

With our state-of-the-art solution, achieve the highest levels of image quality, reliability and productivity in your mission.



## High quality

With our advanced camera solutions, experience high image quality by capturing precise and reliable results. Blur Control Technology (BCT) addresses motion blur at the source through high-speed shutters, while highly sensitive CMOS sensors and engineered optics guarantee high quality data outcomes. As a result, our high-resolution NRGB capabilities provide a representation closest to reality.



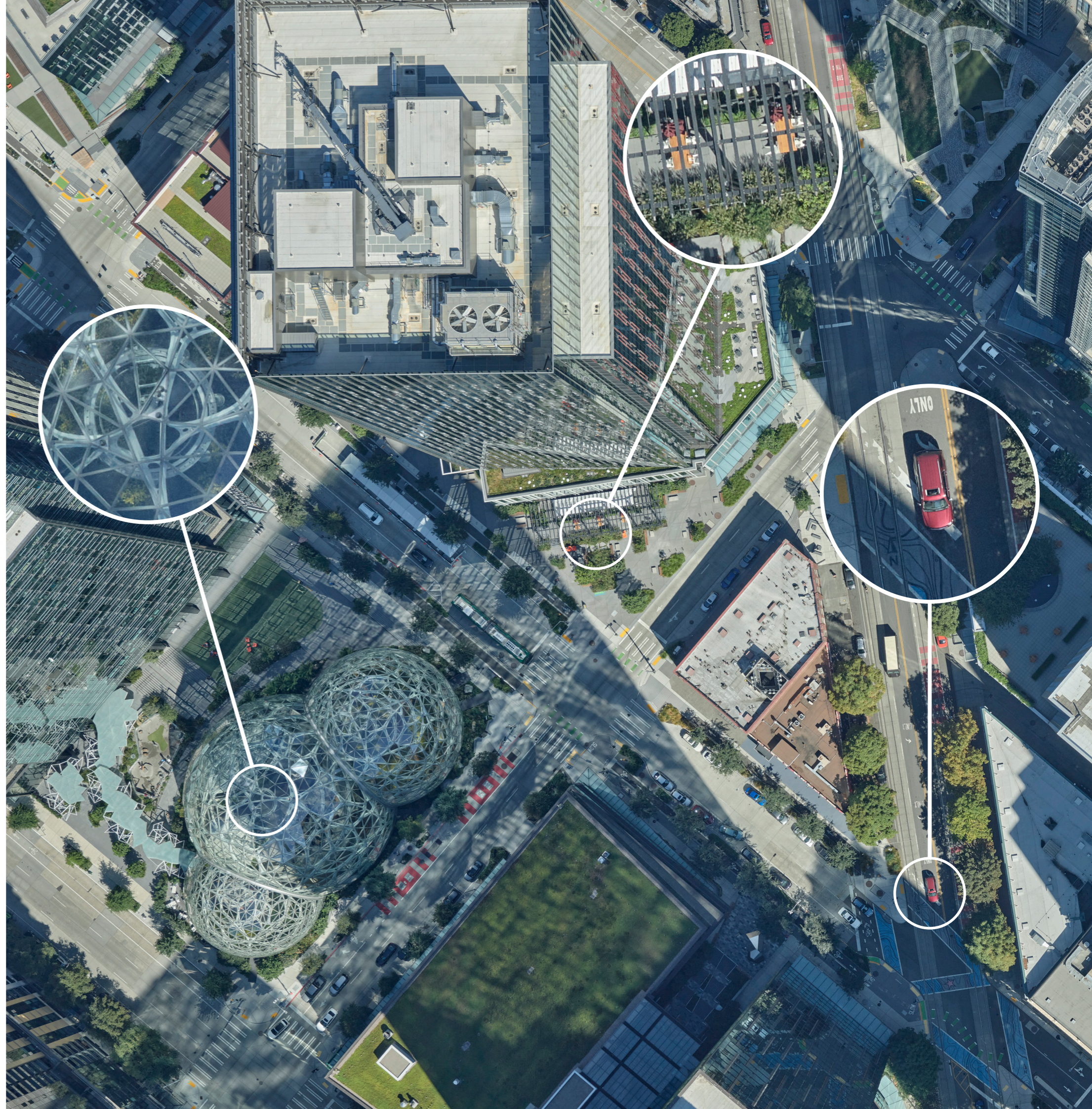
## High reliability

Our solutions ensure quality control throughout the entire workflow from the earliest stage. Our iX Suite software offers a user-friendly interface for accurate planning, immediate quality assurance and re-fly options, and automated image quality assessment based on customizable criteria.



## High productivity

Experience high productivity with our compact and lightweight solutions that allow you to fly longer with the same fuel consumption. Our proprietary Intelligent Image Quality (IIQ) format ensures minimum data handling time and data storage. The wide coverage reduces the number of flight lines required to cover the project area while maintaining the same Ground Sampling Distance (GSD) and side-overlap requirement.



# Phase One Aerial Solutions

Our aerial solutions feature superior quality imaging sensors for sharp, distortion-free images and accurate geospatial data while assuring data quality from the earliest stage possible with our iX Suite software.

## Compact Solutions

For those performing local and regional planning with small-to-medium-performance aircraft and aiming to achieve high-resolution data captured while having a compact and light system.



PAS 150

PAS 280

## PAS 150

**The most compact solution for aerial mapping**

- Variety of lenses to choose from based on your needs.
- Designed for small camera port or mounting on the wing pod.

## PAS 280

**The most cost-effective solution for aerial mapping**

- Smallest SWaP in its class.
- Designed for medium-size camera port.
- Available also as full-size version, designed for 20" camera ports, ensuring a wise investment for future oblique imaging needs.

## iX Suite workflow



### iX Plan

Select the camera from the database and plan with the selected camera-lens combination.



### iX Flight Pro

Manage the entire system in flight and display all images for immediate review, QC, and re-flight assignment.



### iX Process

Display images from the camera to view the actual ground coverage.

- Color balancing available.
- Semi-automated quality control on RAW images to save time.

We bring you unparalleled aerial mission success from flight planning, to execution, and final data delivery with high image quality, reliability and productivity in mind.



[Learn more](#)

## Full-size Solutions

For those creating high precision 3D city models, country-wide planning with medium-to-large surveying aircraft and with the need of using a broad GSD range.



PAS 880

PAS PANA

## PAS 880

**The most efficient solution for 3D city modeling**

- Balanced GSD across all images for both nadir and oblique cameras.
- Flexible in use for either combined or nadir-only projects.
- Modular system (RGB, NIR, Oblique).

## PAS PANA

**The most productive wide-area camera solution for photogrammetric aerial mapping**

- Achieve highest productivity with large swath.
- Adjust resolution to your needs.
- Embrace freedom to choose your aircraft and any preferred post-processing software supporting multi-head systems.
- Break free from content program constraints.

## iX Suite workflow



### iX Plan

All Phase One PAS systems are fully supported in iX Plan and can be easily selected from a database.



### iX Flight Pro





Manage the entire system in flight and display images for individual cameras for immediate review, QC, and re-flight assignment.



### iX Process

Display images from one or all cameras to view

- Nadir and oblique coverage when using PAS 880.
- Actual ground coverage when operating with PAS PANA.
- Color balancing available.
- Semi-automated quality control on RAW images to save time.

								
	PAS 150		PAS 280		PAS 880		PAS Pana	
Cameras	Nadir 150MP RGB camera with a variety of lens options  150MP NIR camera (optional)		Nadir 280MP RGB camera with a 90 mm lens  150MP NIR camera with a 50 mm lens		Nadir 280MP RGB camera with a 90 mm lens  150MP NIR camera with a 50 mm lens  Oblique 4x 150MP RGB cameras with 150 mm lenses		Nadir 5x 150MP RGB camera with a 150 mm lens  2x 150MP NIR camera with a 70 mm lens	
Pixel swath	14,204		20,150		20,150 (Nadir) 14,204 (Oblique)		48,800	
Frame size	Nadir 14,204 x 10,652 pixels (RGB) 14,204 x 10,652 pixels (NIR)		Nadir 20,150 x 14,118 pixels (RGB) 14,204 x 10,652 pixels (NIR)		Nadir 20,150 x 14,118 pixels (RGB) 14,204 x 10,652 pixels (NIR)  Oblique 4 x 14204 x 10652 pixels (RGB)		Nadir 5 x 10652 x 14204 pixels (RGB) 2 x 14204 x 10652 pixels (NIR)	
Coverage	Nadir 5 cm 0.38 km² 10 cm 1.51 km² 20 cm 6.05 km²		Nadir 5 cm 0.72 km² 10 cm 1.51 km² 20 cm 11.45 km²		Nadir 5 cm 0.72 km² 10 cm 1.51 km² 20 cm 11.45 km²  Oblique Forward/Backward 5 cm 0.40 km² 10 cm 1.61 km² 20 cm 6.43 km²  Oblique Left/Right 5 cm 0.35 km² 10 cm 1.42 km² 20 cm 5.67 km²		Nadir 5 cm 1.73 km² 10 cm 7.21 km² 20 cm 28.85 km²	
Field of view	RGB/NIR 40 mm 53.2 ° along track 67.5 ° across track  50 mm 43.7 ° along track 56.2 ° across track  70 mm 31.9 ° along track 41.8 ° across track  90 mm 25.1 ° along track 33.1 ° across track		RGB 32.9 °along track 45.7° across track  NIR 43.7° along track 56.2° across track		RGB (Nadir) 32.9° along track 45.7° across track  NIR (Nadir) 43.7° along track 56.2° across track  RGB (Oblique) 20.2° along track 15.2° across track		RGB 20.2° along track 70.0° across track  NIR 31.9° along track 70.0° across track	
Frames per second	2		2		2		1.7	
Dynamic range (dB)	83		83		83		83	
Channels	RGB, NIR optional		RGB, NIR optional		RGB, NIR optional		RGB, NIR	
Power consumption	110w 160w max peak power		330w 400w max peak power		400w 470w max peak power		400w 470w max peak power	
System weight (kg/lb)	8.5 / 19		18.4 / 40.4		47 / 104		47 / 104	
Dimensions (mm/in)	290 x 275 x 121 / 11.4 x 10.8 x 4.7		408 x 716 x 691 / 16 x 28 x 27.2		408 x 716 x 691 / 16 x 28 x 27.2		408 x 716 x 691 / 16 x 28 x 27.2	
Data storage capacity (Controller)	4 TB or 8 TB 64 GB RAM		4 TB or 8 TB 64 GB RAM		24 TB 128 GB RAM		24 TB 128 GB RAM	
GNSS/IMU	iX Controller with integrated Applanix GNSS-Inertial  AP180 (IMU – 69/79) AP310 (IMU - 93) AP510 (IMU - 95) AP610 (IMU - 57)		iX Controller with integrated Applanix GNSS-Inertial  AP310 (IMU - 93) AP510 (IMU - 95) AP610 (IMU - 57)		Integrated Applanix GNSS-Inertial  AP510 (IMU – 95) AP610 (IMU – 57)		Integrated Applanix GNSS-Inertial  AP610 (IMU - 57)	
Stabilized mount	Somag gyro-stabilized mount CSM 40 or DSM 400		Somag gyro-stabilized mount DSM 400 or GSM 4000		Somag gyro-stabilized mount GSM 4000		Somag gyro-stabilized mount GSM 4000	
Mount weight (kg/lb)	5.2 / 11.5		14 / 30.8		29 / 63.9		29 / 63.9	



# Your tailored support for every need

With a global network of skilled engineers and technicians, we got you covered.

We are committed to assist you in meeting deadlines and minimizing downtime by providing fast and efficient communication as well as staff training to stay up-to-date on the latest developments. Together, we can collaborate on your future needs and ensure a seamless experience.



Fast and efficient communication



Customer portal



Global coverage



## Silver

- ✓ Online support
- ✓ Firmware and software maintenance
- ✓ Phone support\*

Free repair\*\*

Proactive shutter change\*\*\*

Cables and consumables covered

On-site support or component loan

System calibration\*\*\*\*



## Gold

- ✓ Online support
- ✓ Firmware and software maintenance
- ✓ Phone support\*

Free repair\*\*

Proactive shutter change\*\*\*

✓ Cables and consumables covered

On-site support or component loan

System calibration\*\*\*\*



## Platinum

- ✓ Online support
- ✓ Firmware and software maintenance
- ✓ Phone support\*

Free repair\*\*

Proactive shutter change\*\*\*

✓ Cables and consumables covered

✓ On-site support or component loan

✓ System calibration\*\*\*\*

\* Online and phone support limited to standard business hours, Monday to Friday.  
\*\* Free repair does not apply to physical damage, water damage, or failure due to improper use.  
\*\*\* Proactive shutter change available at or near 500,000 captures. Limit 1 per year per shutter.  
\*\*\*\* 1 per year based on customer flight.

### Terms & conditions

- Online and phone support available during each office's standard business hours.
- Guaranteed response time is within 24 hours during business hours.
- On-site support or component loan at the discretion of Phase One Support and based on best practical solution.
- Policy renewals begin at the expiration date of previous contract.

# PHASEONE

## About Phase One

Phase One is a global leader in digital imaging technology. Our commitment to imaging quality spans a wide spectrum of applications, from professional photography to heritage digitization, industrial inspections, aerial mapping, security and space.

With over three decades of innovation, Phase One has pioneered core imaging technologies and a range of digital cameras and imaging modules, setting new standards for image quality in terms of resolution, dynamic range, color fidelity and geometric accuracy. Together with its customers, technology partners and its global network of distributors, Phase One drives the imaging industry forward.

We deliver Imaging Beyond Imagination.

[www.phaseone.com](http://www.phaseone.com)



Contact your Phase One representative regarding availability of Phase One products in your region.

© Phase One A/S 2025.  
All rights reserved.